



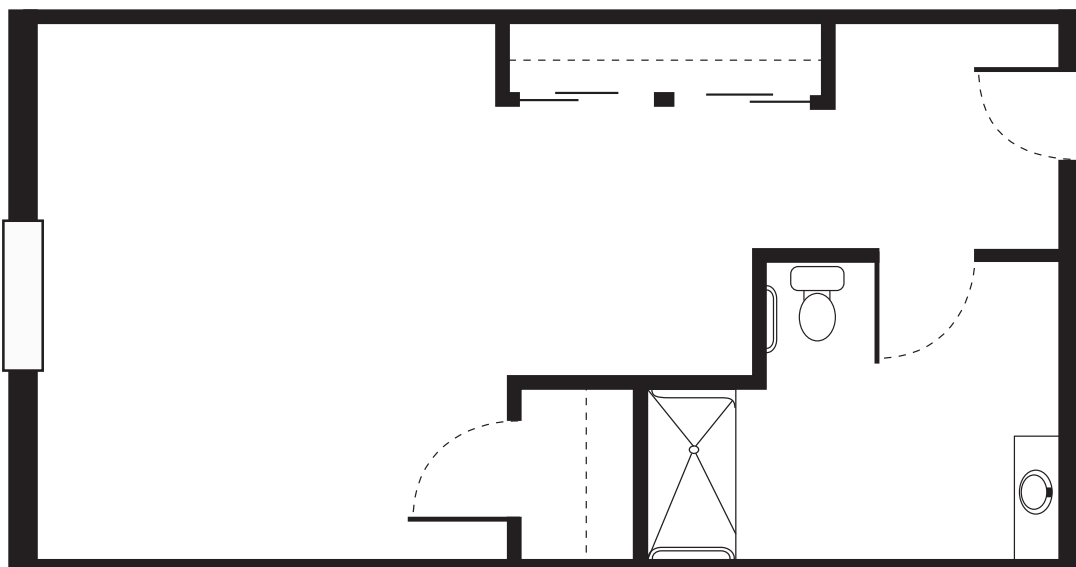
Pine Grove

Services and Amenities Included:

- Emergency Call System with Pendant
- Licensed Nurse Available 24/7
- Transportation to Medical Appointments
- Daily Activities & Fitness Programs
- Off-site Trips and Outings
- Three Daily Meals Prepared by Our Chef
- Coffee & Beverage Bar
- Laundry & salon available to residents
- Weekly Housekeeping
- Standard Room Furnishings available
- Wireless Internet Access
- All utilities except telephone & cable
(*\$15 each*)
- Assistance with medications available
(*cost associated*)

Studio

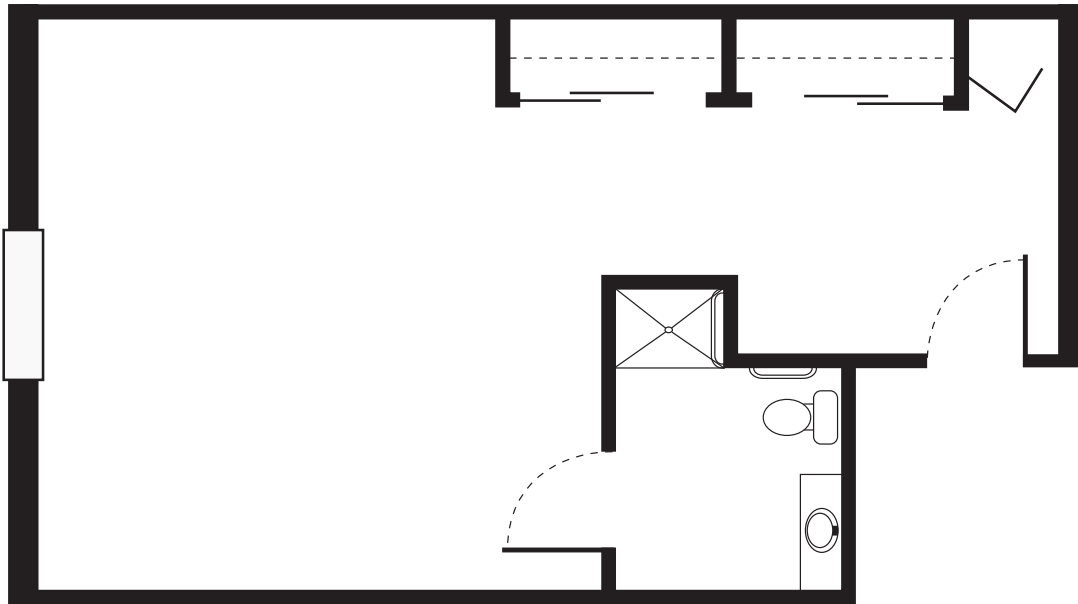
300 sq. ft.





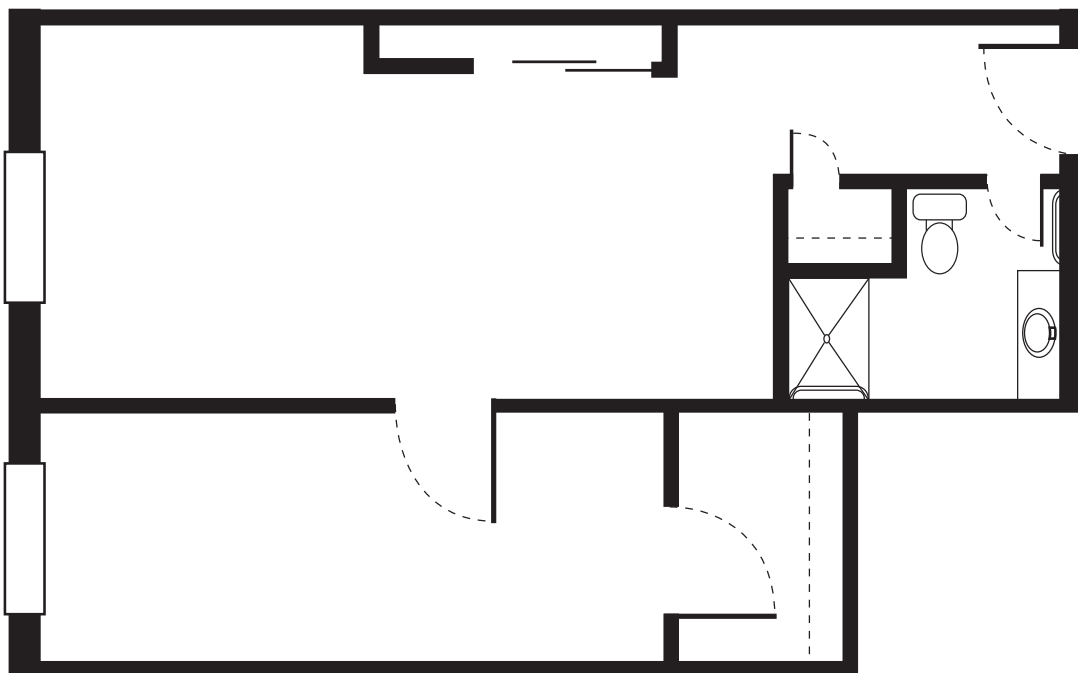
Large Studio

430 sq. ft.



1 Bedroom

542 sq. ft.





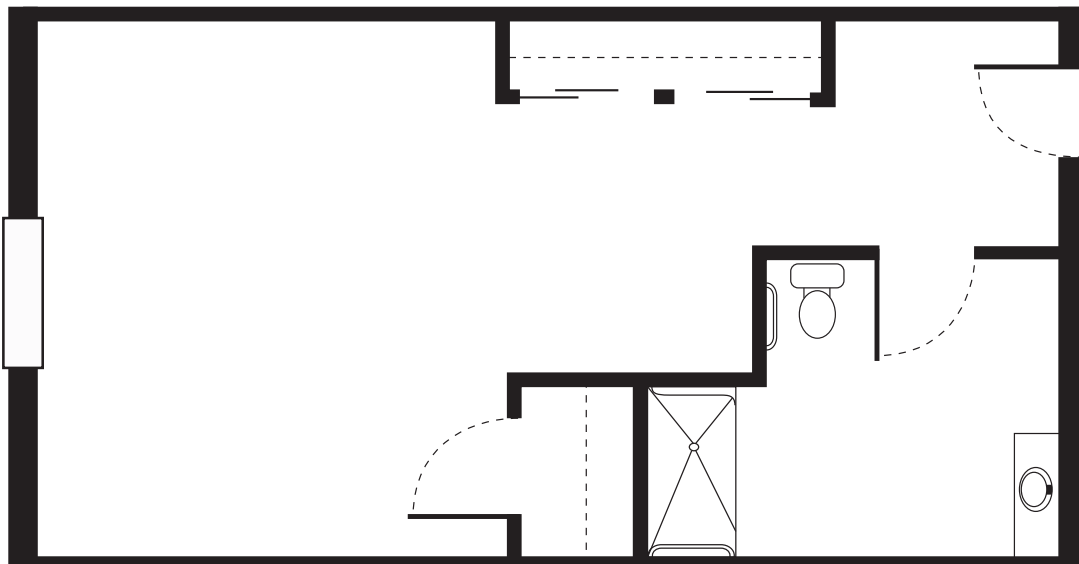
Pine Grove

Services and Amenities Included:

- Individualized Resident Support Plan
- Assistance with Managing Medications
- Assistance with Personal Hygiene and other Activities of Daily Living
- Coordination and Scheduling of Medical Appointments
- Emergency Call System with Pendant
- Licensed Nurse Available 24/7
- Transportation to Medical Appointments
- Daily Activities & Fitness Programs
- Off-site Trips and Outings
- Three Daily Meals Prepared by Our Chef
- Coffee & Beverage Bar
- Assistance with Personal Laundry
- Laundry & salon available to residents
- Weekly Housekeeping
- Standard Room Furnishings available
- Wireless Internet Access
- All utilities except telephone & cable (\$15 each)

Studio

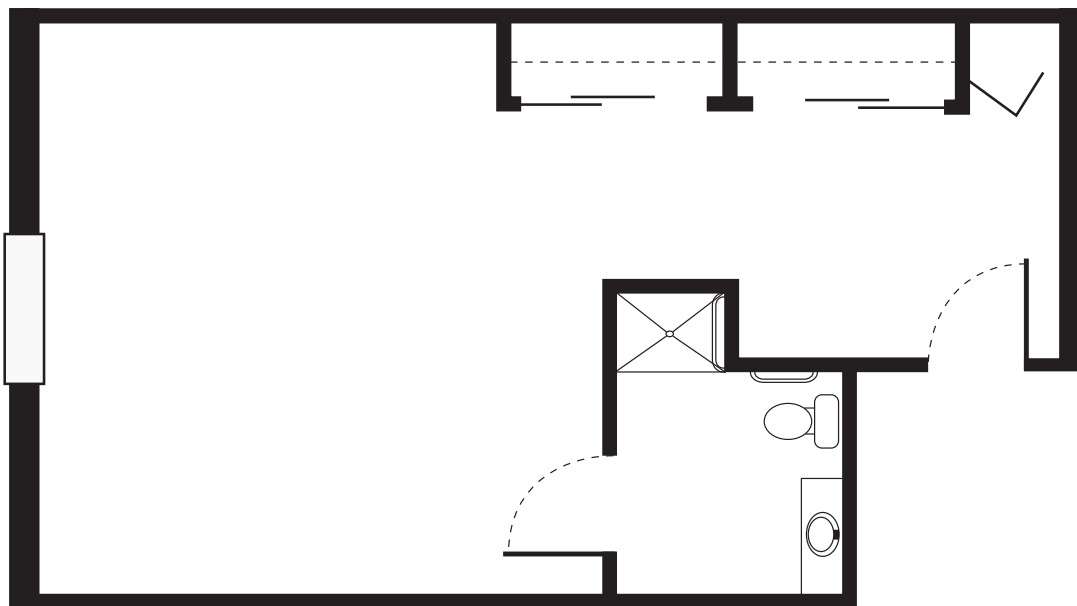
300 sq. ft.





Large Studio

430 sq. ft.



1 Bedroom

542 sq. ft.

