



## Collegeville Service Package Includes:

- Monthly rental of your choice of apartment
- All utilities except telephone (\$25) & cable (\$35)
- Three daily meals prepared by Our Chef
- Coffee, snacks & beverage bar daily
- Standard room furnishings and TV available
- Weekly apartment cleaning and linen exchange
- Laundry, salon & theatre available to residents
- Emergency call pendant
- Transportation to local medical appointments
- Daily activities, social programs & outings
- Licensed Nurse available 24/7
- Wireless internet access

\*10% discount on shared rate for married couples.

\*\* One-time Community fee of \$3,000 (single) or \$4,000 (couple)

### Service Level 1:

Service level 1 includes all of the amenities and services included in the standard service package plus **assistance with medication management**

### Service Level 2:

Service level 2 includes all of the amenities and services included in the standard service package and service level 1 plus **routine assistance from a resident life associate with activities of daily living**

### Service Level 3:

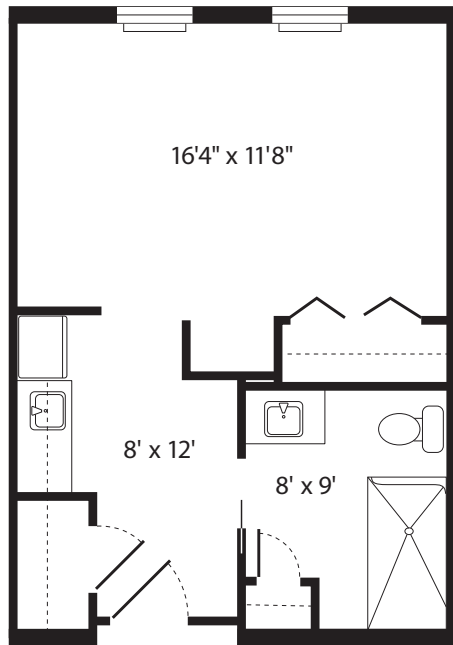
Service level 3 includes all of the amenities and services included in the standard service package and service level 1 plus **extensive assistance from resident life associates and/or oversight of a medical condition by a licensed nurse**

### Service Level 4:

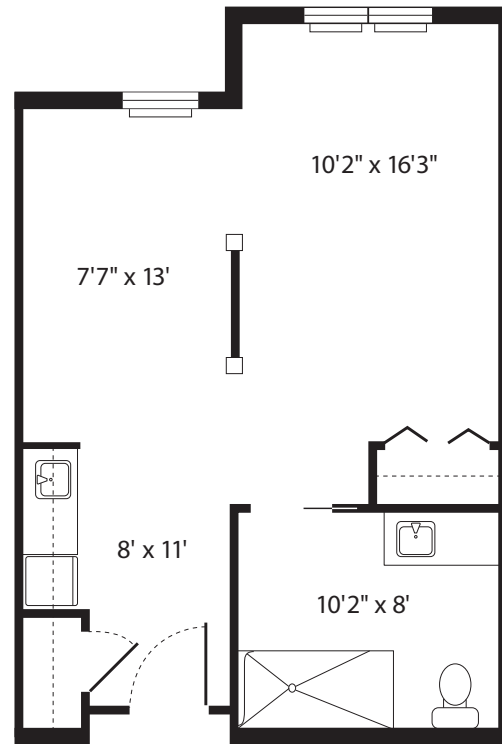
Service level 4 includes all of the amenities and services included in the standard service package and service level 1 plus **maximum assistance from resident life associates and/or oversight of a medical condition by a licensed nurse**



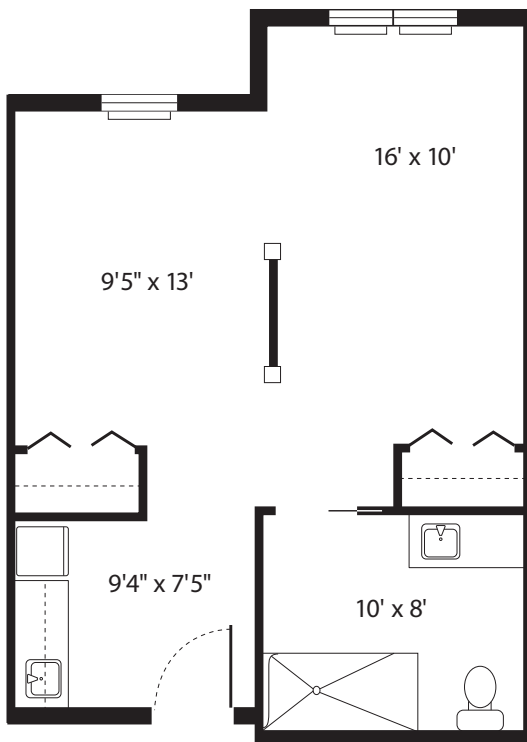
# Floor Plan Options



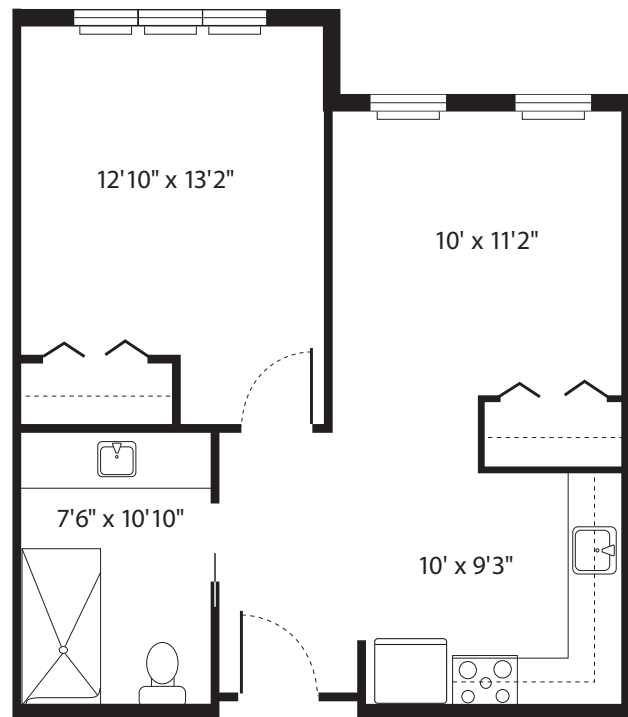
**Studio** 359 sq. ft.



**Deluxe Studio** 433 sq. ft.



**Double Studio** 432 sq. ft.



**1 Bedroom Suite** 455 sq. ft.





## Collegeville Service Package Includes:

- Individualized Resident Support Plan
- Monthly rental of your choice of apartment
- All utilities except telephone (\$25) & cable (\$35)
- Three daily meals prepared by Our Chef
- Coffee, snacks & beverage bar daily
- Standard room furnishings and TV available
- Weekly apartment cleaning and linen exchange
- Personal Laundry Service
- Laundry, salon & chapel available to residents
- Therapeutic Memory Care Programming
- Off-site Trips & Outings
- Dementia-Certified Caregivers
- Assistance with Managing Medications
- Cueing and Assistance with Personal Hygiene and other Activities of Daily Living
- Coordination and Scheduling of Medical Appointments
- Transportation to Medical Appointments
- Licensed Nurse Available 24/7
- Access to a Secured Courtyard with Walkway
- Routine Safety Checks
- Wireless internet access

\*10% discount on shared rate for married couples.

\*\* One-time Community fee of \$3,000 (single) or \$4,000 (couple)



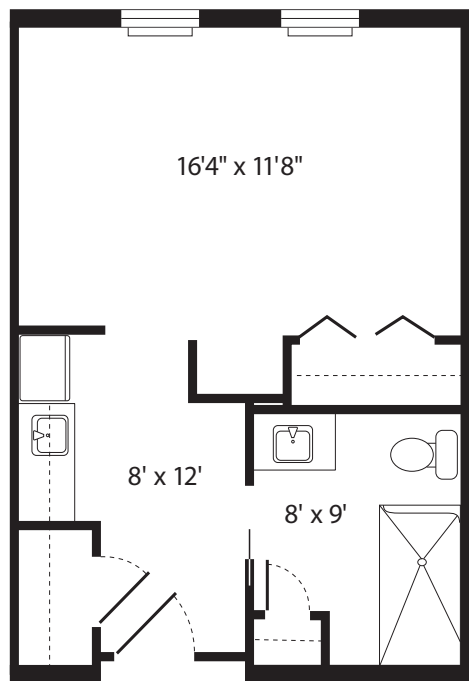
### Service Level 1:

Service level 1 includes all of the amenities and services included in the standard service package plus *extensive assistance from resident life associates with activities of daily living*

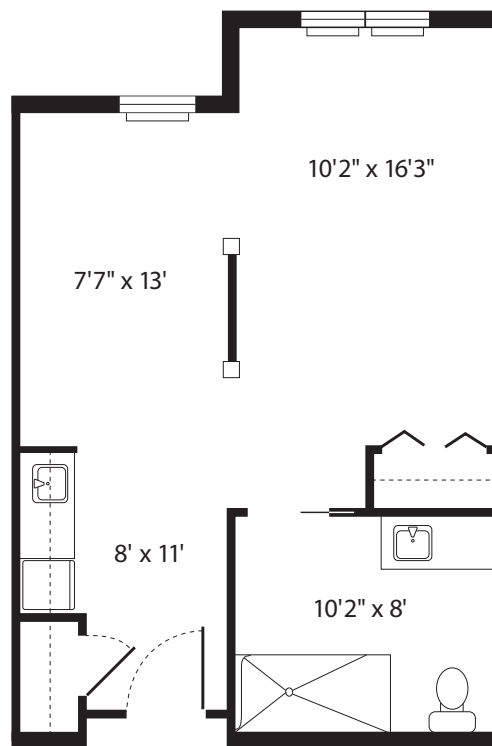
### Service Level 2:

Service level 2 includes all of the amenities and services included in the standard service package plus *maximum assistance from resident life associates with activities of daily living*

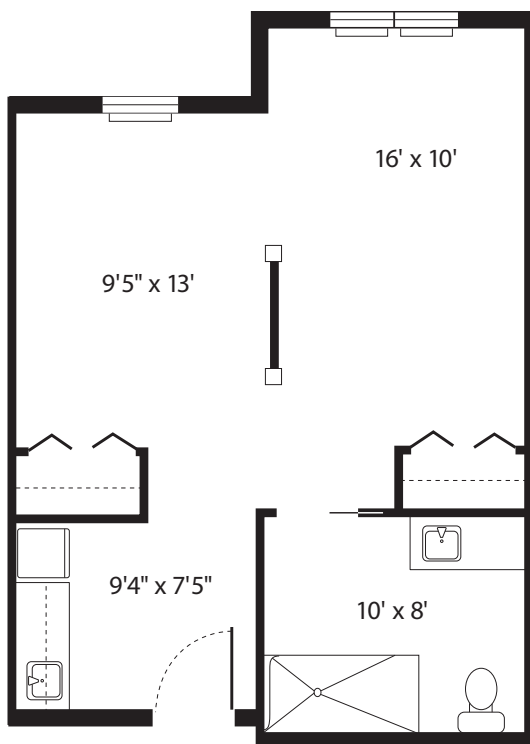
# Floor Plan Options



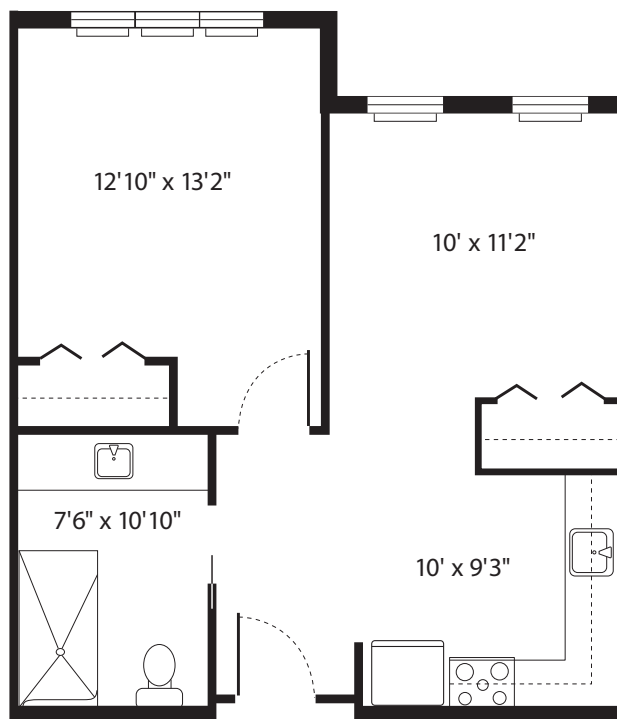
**Studio** 359 sq. ft.



**Deluxe Studio** 433 sq. ft.



**Double Studio** 432 sq. ft.



**1 Bedroom Suite** 455 sq. ft.

