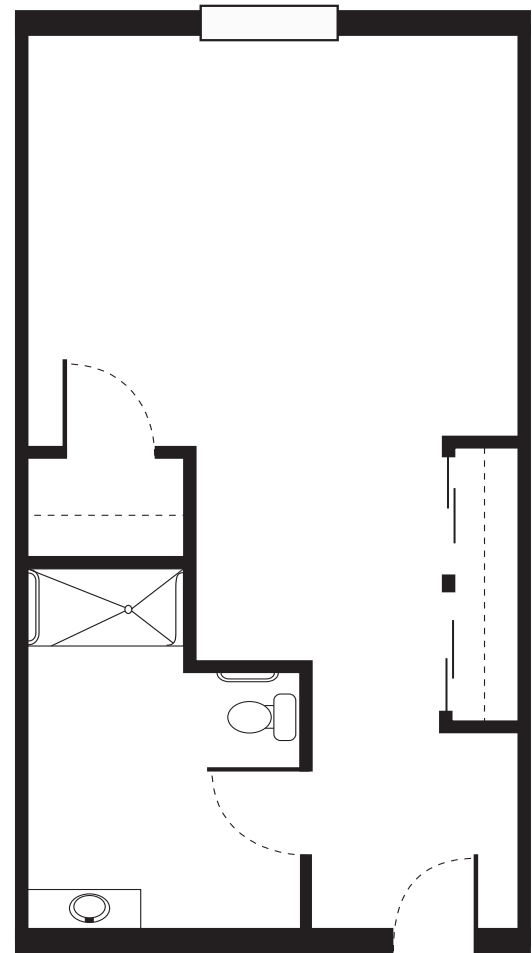




## *Pine Grove Service Package Includes:*

- Individualized Resident Support Plan
- Monthly rental of your choice of apartment
- All utilities except telephone & cable (\$15 each)
- Three daily meals prepared by our Chef
- Coffee, snacks & beverage bar daily
- Standard room furnishings available
- Weekly apartment cleaning and linen exchange
- Personal laundry service
- Laundry & salon available to residents
- Therapeutic Memory Care programming
- Off-site trips & outings
- Dementia-certified caregivers
- Assistance with managing medications
- Cueing and assistance with personal hygiene and other activities of daily living
- Coordination and scheduling of medical appointments
- Transportation to medical appointments
- Licensed Nurse available 24/7
- Access to a secured courtyard with walkway
- Routine safety checks
- All incontinence supplies
- Wireless internet access



**Studio**

*300 sq. ft.*

### **Service Level 1 (+\$500):**

Service level 1 includes all of the amenities and services included in the standard service package plus ***extensive assistance from resident life associates with activities of daily living***

### **Service Level 2 (+\$1,000):**

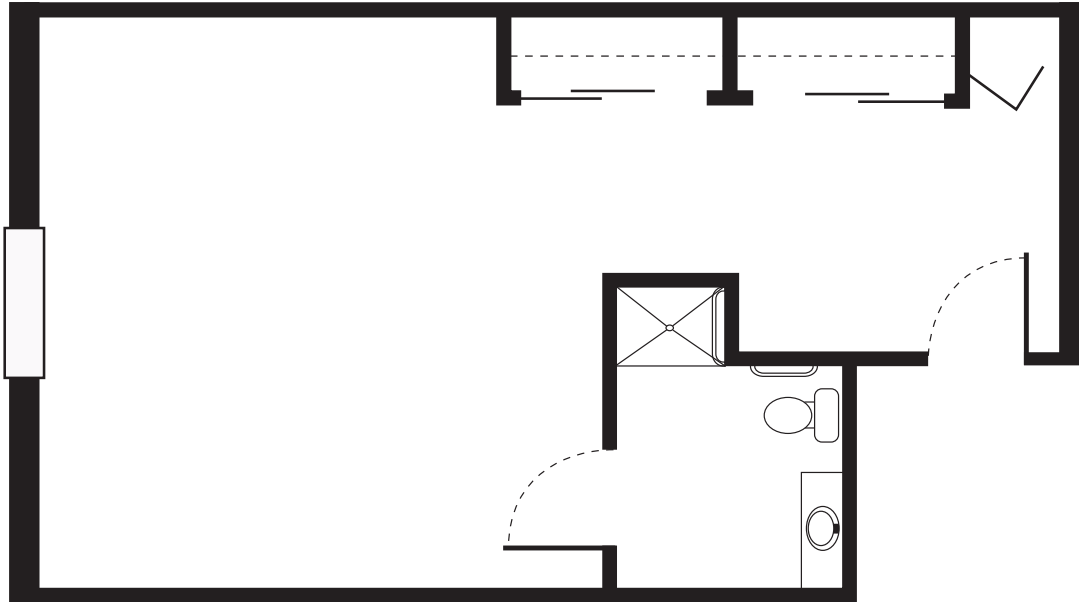
Service level 2 includes all of the amenities and services included in the standard service package plus ***maximum assistance from resident life associates with activities of daily living***

# Floor Plan Options



## Large Studio

430 sq. ft.



## 1 Bedroom

542 sq. ft.

