

Enhanced Senior Living



Chambersburg Service Package

Includes:

- Monthly rental of your choice of apartment
- All utilities except telephone & cable (\$25 each)
- Three daily meals prepared by Our Chef
- Coffee, snacks & beverage bar daily
- Standard room furnishings available
- Weekly apartment cleaning and linen exchange
- Laundry, salon & chapel available to residents
- Emergency call pendant (service level 3 & 4)
- Transportation to local medical appointments
- Daily activities, social programs & outings
- Licensed Nurse available 24/7
- Wireless internet access

Service Level 1:

Service level 1 includes all of the amenities and services included in the standard service package plus **assistance with medication management**

Service Level 2:

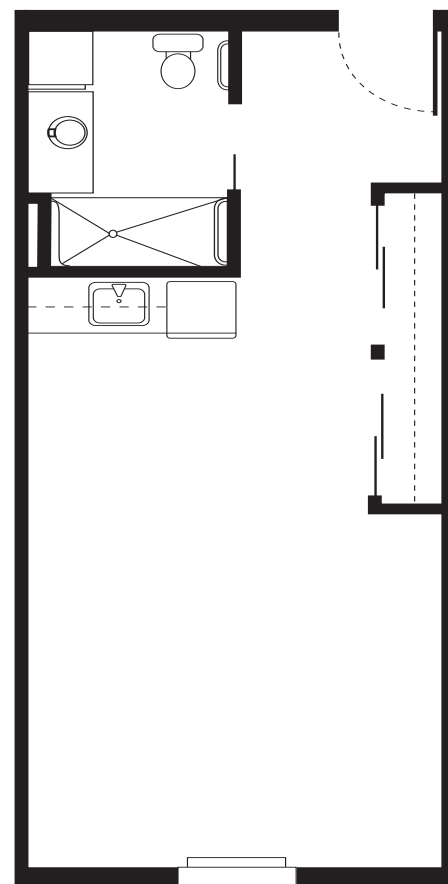
Service level 2 includes all of the amenities and services included in the standard service package plus **assistance with medication management and routine assistance from a resident life associate with activities of daily living**

Service Level 3:

Service level 3 includes all of the amenities and services included in the standard service package plus **assistance with medication management, extensive assistance from resident life associates, and/or oversight of a medical condition by a licensed nurse**

Service Level 4:

Service level 4 includes all of the amenities and services included in the standard service package plus **assistance with medication management, maximum assistance from resident life associates, and/or oversight of a medical condition by a licensed nurse**



Studio

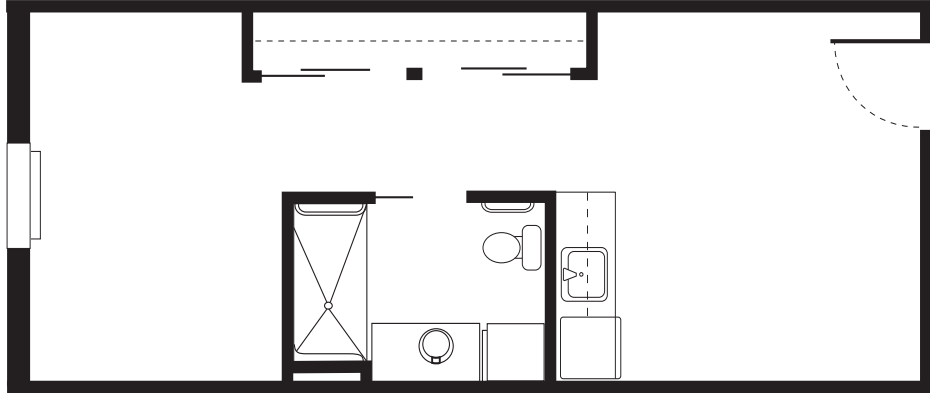
414 sq. ft.

Floor Plan Options



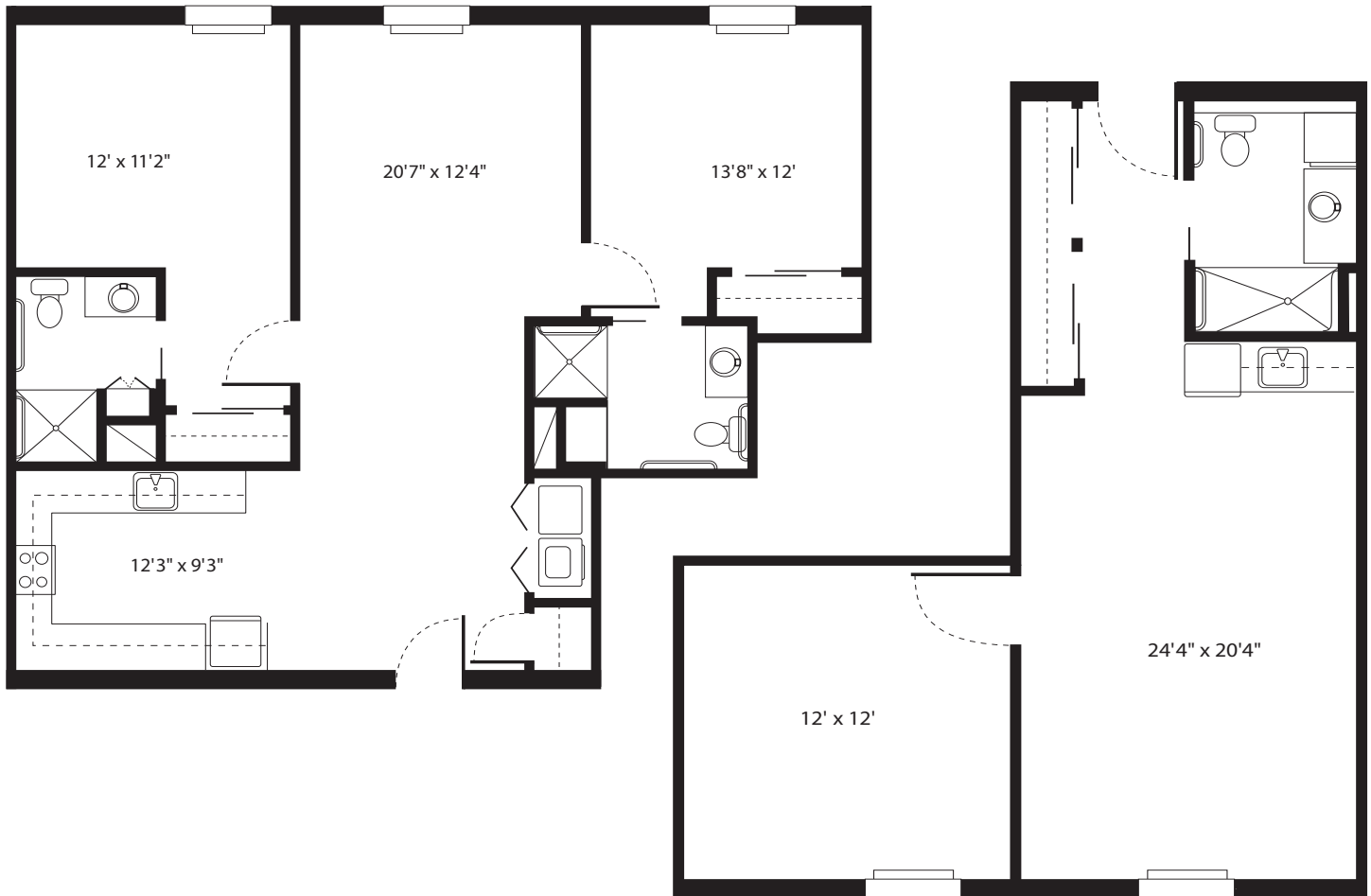
Double Studio Deluxe

467 sq. ft.



2 Bedroom

895 sq. ft.



1 Bedroom

640 sq. ft.



Providence Place
SENIOR LIVING

2085 Wayne Road
Chambersburg, Pennsylvania 17202

717-709-0668
www.Providence-Place.com



Chambersburg Service Package

Includes:

- Individualized Resident Support Plan
- Monthly rental of your choice of apartment
- All utilities except telephone & cable (\$25 each)
- Three daily meals prepared by Our Chef
- Coffee, snacks & beverage bar daily
- Standard room furnishings available
- Weekly apartment cleaning and linen exchange
- Personal Laundry Service
- Incontinence Supplies
- Laundry, salon & chapel available to residents
- Therapeutic Memory Care Programming
- Off-site Trips & Outings
- Dementia-Certified Caregivers
- Assistance with Managing Medications
- Cueing and Assistance with Personal Hygiene and other Activities of Daily Living
- Coordination and Scheduling of Medical Appointments
- Transportation to Medical Appointments
- Licensed Nurse Available 24/7
- Access to a Secured Courtyard with Walkway
- Routine Safety Checks
- Wireless internet access



Service Level 1:

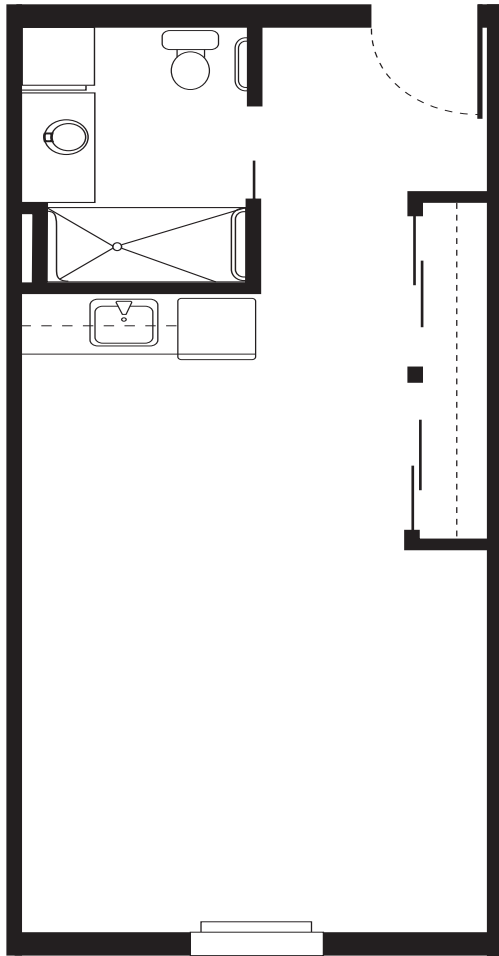
Service level 1 includes all of the amenities and services included in the standard service package plus **extensive assistance from resident life associates with activities of daily living**

Service Level 2:

Service level 2 includes all of the amenities and services included in the standard service package plus **maximum assistance from resident life associates with activities of daily living**



Floor Plan Options



Studio

414 sq. ft.

Double Studio Deluxe

467 sq. ft.

