

# Enhanced Senior Living



## *Dover Service Package Includes:*

- Monthly rental of your choice of apartment
- All utilities except telephone & cable (\$25 each)
- Three daily meals prepared by Our Chef
- Coffee, snacks & beverage bar daily
- Standard room furnishings available
- Weekly apartment cleaning and linen exchange
- Laundry, salon & chapel available to residents
- Emergency call pendant (*service level 3 & 4*)
- Transportation to local medical appointments
- Daily activities, social programs & outings
- Licensed Nurse available 24/7
- Wireless internet access

### **Service Level 1:**

Service level 1 includes all of the amenities and services included in the standard service package plus **assistance with medication management**

### **Service Level 2:**

Service level 2 includes all of the amenities and services included in the standard service package plus **assistance with medication management and routine assistance from a resident life associate with activities of daily living**

### **Service Level 3:**

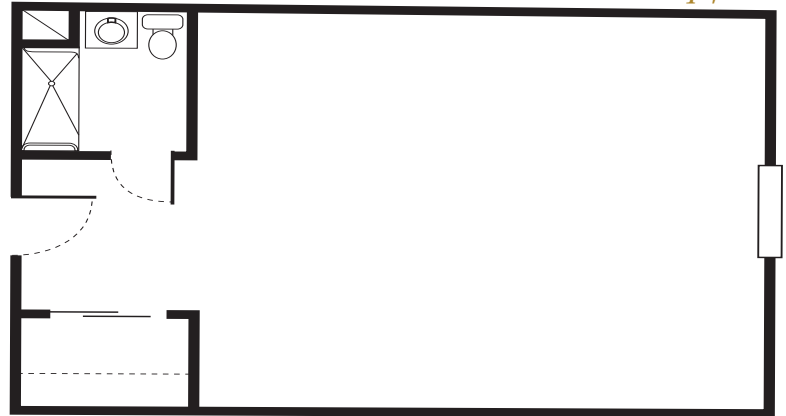
Service level 3 includes all of the amenities and services included in the standard service package plus **assistance with medication management, extensive assistance from resident life associates, and/or oversight of a medical condition by a licensed nurse**

### **Service Level 4:**

Service level 4 includes all of the amenities and services included in the standard service package plus **assistance with medication management, maximum assistance from resident life associates, and/or oversight of a medical condition by a licensed nurse**

### **Studio**

258 sq. ft.



### **Small Alcove**

347 sq. ft.

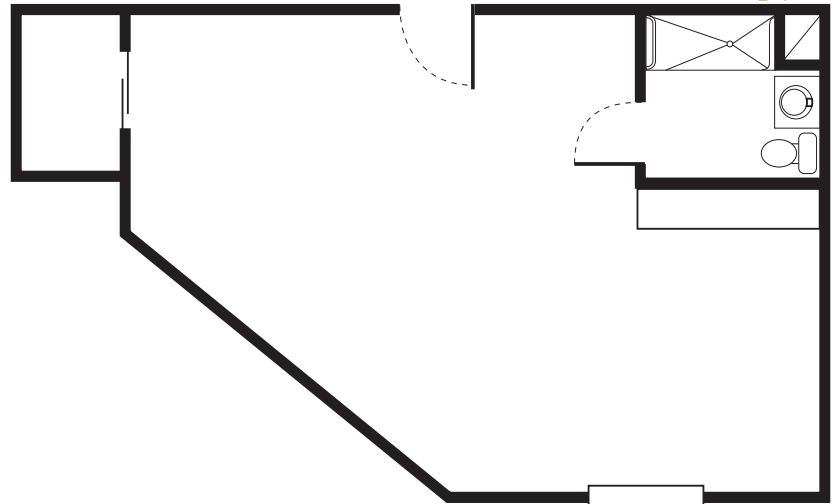


# Floor Plan Options



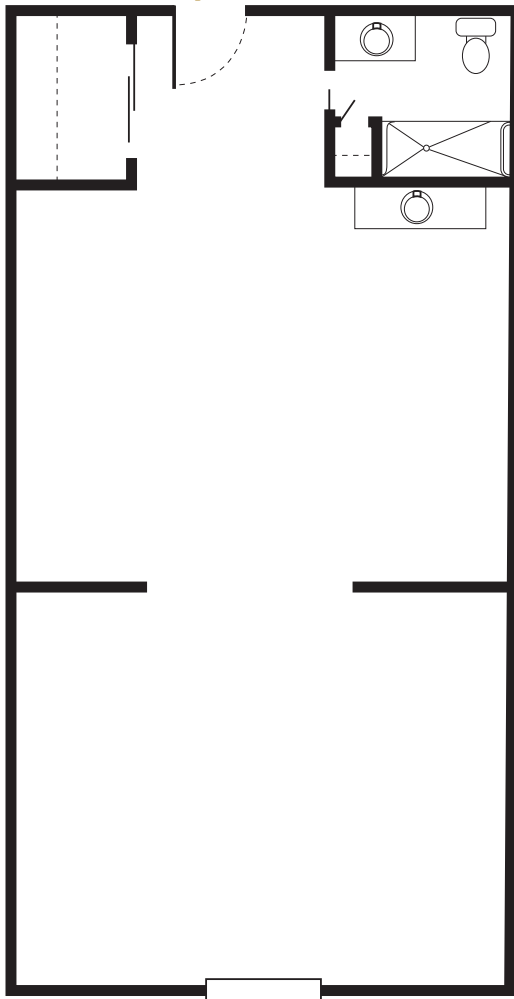
## Deluxe Alcove

370 sq. ft.



\*exact floorplans vary

## Efficiency Suite 410-430 sq. ft.



## 1 Bedroom

461 sq. ft.



\*exact floorplans vary





## *Dover Service Package Includes:*

- Individualized Resident Support Plan
- Monthly rental of your choice of apartment
- All utilities except telephone & cable (\$25 each)
- Three daily meals prepared by Our Chef
- Coffee, snacks & beverage bar daily
- Standard room furnishings available
- Weekly apartment cleaning and linen exchange
- Personal Laundry Service
- Incontinence Supplies
- Laundry, salon & chapel available to residents
- Therapeutic Memory Care Programming
- Off-site Trips & Outings
- Dementia-Certified Caregivers
- Assistance with Managing Medications
- Cueing and Assistance with Personal Hygiene and other Activities of Daily Living
- Coordination and Scheduling of Medical Appointments
- Transportation to Medical Appointments
- Licensed Nurse Available 24/7
- Access to a Secured Courtyard with Walkway
- Routine Safety Checks
- Wireless internet access

### **Service Level 1:**

Service level 1 includes all of the amenities and services included in the standard service package plus **extensive assistance from resident life associates with activities of daily living**

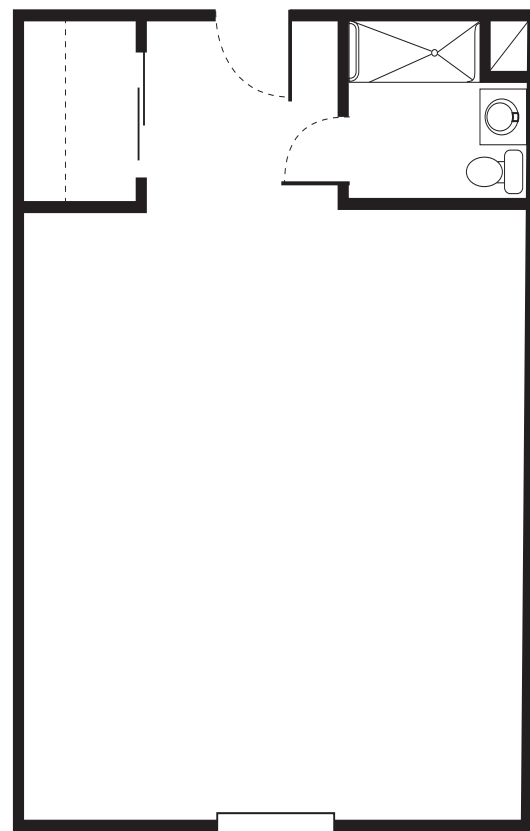
### **Service Level 2:**

Service level 2 includes all of the amenities and services included in the standard service package plus **maximum assistance from resident life associates with activities of daily living**

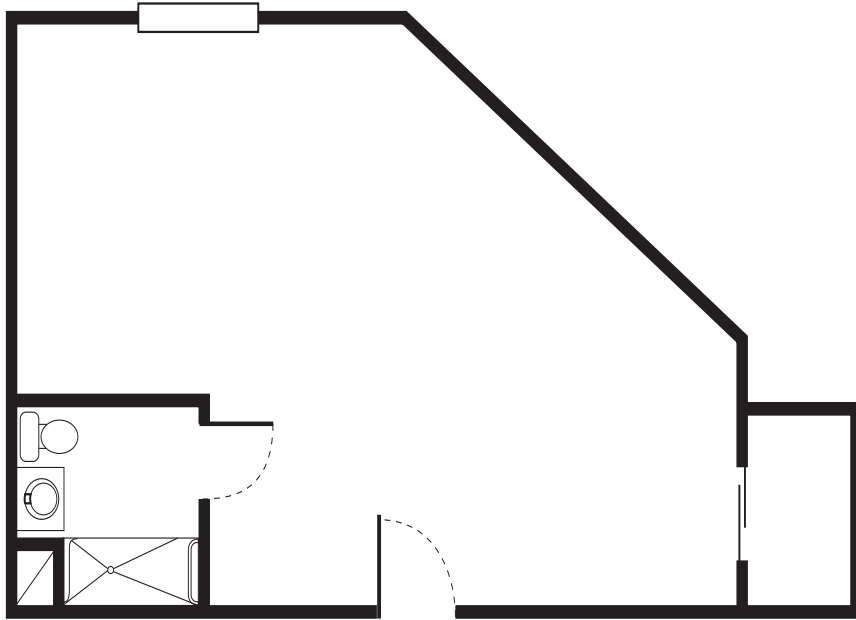


### **Studio**

258 sq. ft.



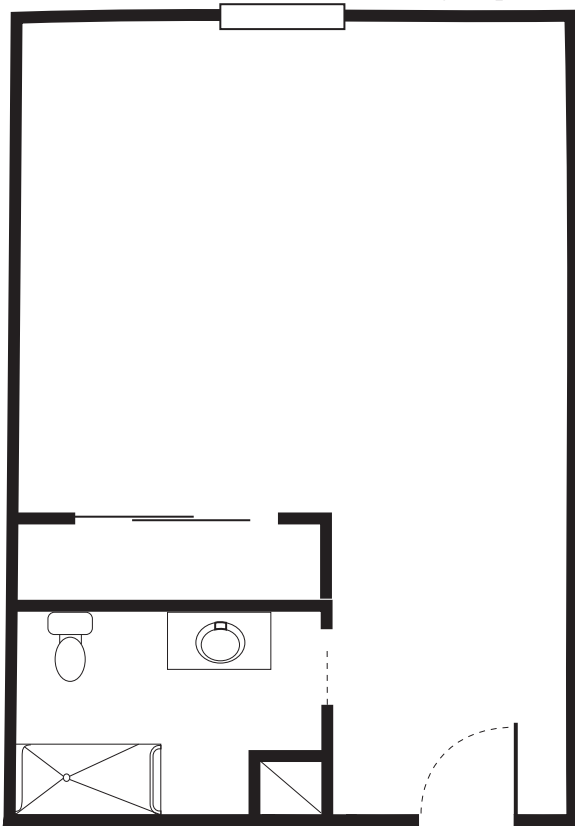
# Floor Plan Options



**Deluxe Alcove\***

370 sq. ft.

*\*exact floorplans vary*



**Efficiency Suite**

410 sq. ft.

