

# Enhanced Senior Living



## Drums Service Package Includes:

- Monthly rental of your choice of apartment
- All utilities except telephone & cable (\$25 each)
- Three daily meals prepared by Our Chef
- Coffee, snacks & beverage bar daily
- Standard room furnishings available
- Weekly apartment cleaning and linen exchange
- Laundry, salon & chapel available to residents
- Emergency call pendant (service level 3 & 4)
- Transportation to local medical appointments
- Daily activities, social programs & outings
- Licensed Nurse available 24/7
- Wireless internet access

### Service Level 1:

Service level 1 includes all of the amenities and services included in the standard service package plus **assistance with medication management**

### Service Level 2:

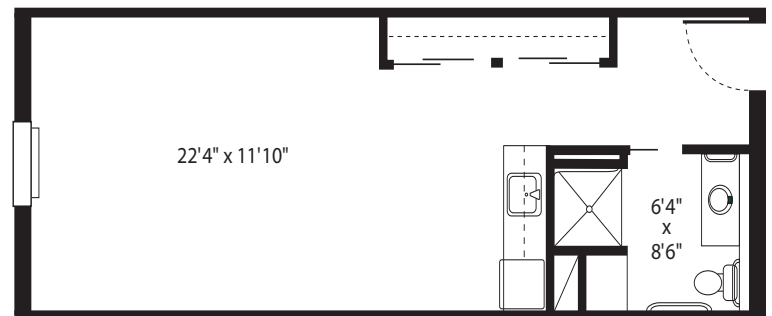
Service level 2 includes all of the amenities and services included in the standard service package plus **assistance with medication management and routine assistance from a resident life associate with activities of daily living**

### Service Level 3:

Service level 3 includes all of the amenities and services included in the standard service package plus **assistance with medication management, extensive assistance from resident life associates, and/or oversight of a medical condition by a licensed nurse**

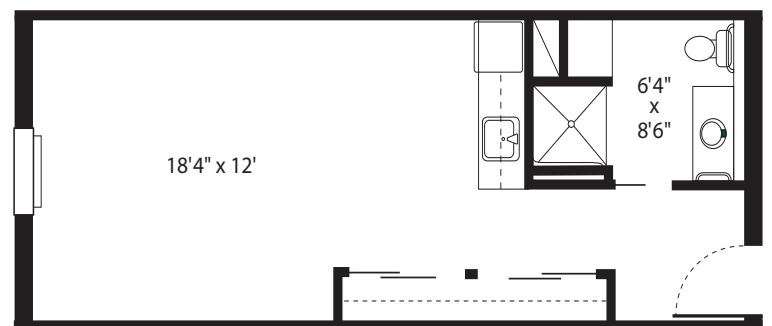
### Service Level 4:

Service level 4 includes all of the amenities and services included in the standard service package plus **assistance with medication management, maximum assistance from resident life associates, and/or oversight of a medical condition by a licensed nurse**



**Large Studio**

374 sq. ft.



**Studio**

330 sq. ft.



Providence Place  
SENIOR LIVING

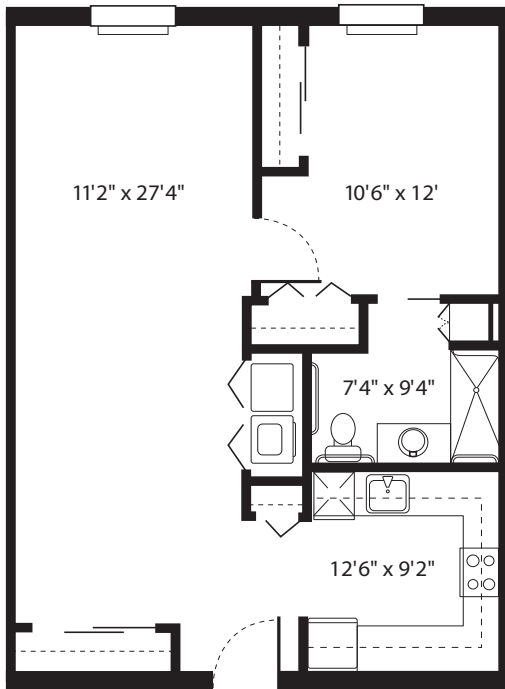
149 S Hunter Highway  
Drums, Pennsylvania 18222

570-788-7555  
[www.Providence-Place.com](http://www.Providence-Place.com)

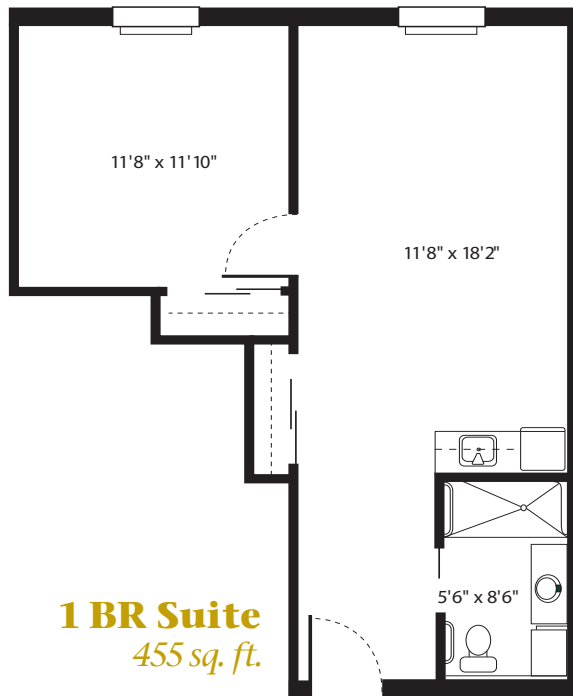
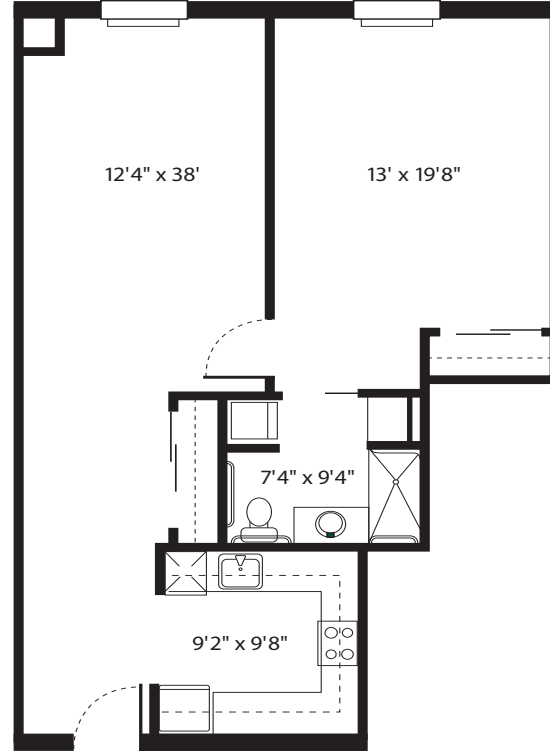
# Floor Plan Options



**Deluxe Suite A** 590 sq. ft.

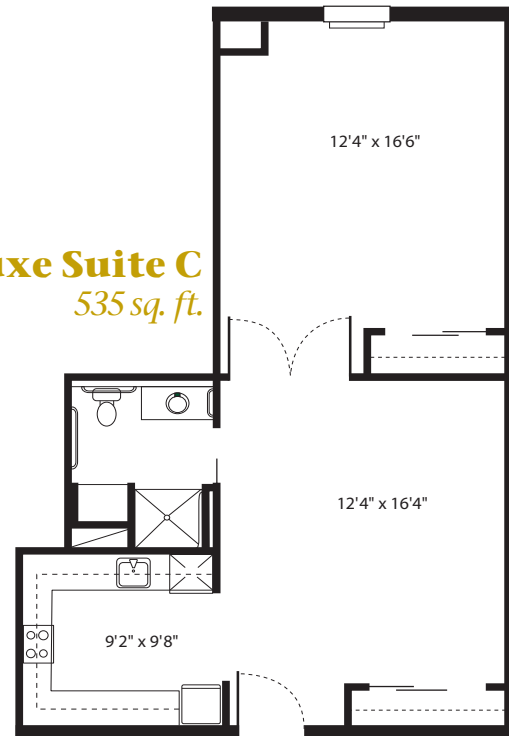


**Deluxe Suite B** 830 sq. ft.



**1 BR Suite**  
455 sq. ft.

**Deluxe Suite C**  
535 sq. ft.





## *Drums Service Package Includes:*

- Individualized Resident Support Plan
- Monthly rental of your choice of apartment
- All utilities except telephone & cable (\$25 each)
- Three daily meals prepared by Our Chef
- Coffee, snacks & beverage bar daily
- Standard room furnishings available
- Weekly apartment cleaning and linen exchange
- Personal Laundry Service
- Incontinence Supplies
- Laundry, salon & chapel available to residents
- Therapeutic Memory Care Programming
- Off-site Trips & Outings
- Dementia-Certified Caregivers
- Assistance with Managing Medications
- Cueing and Assistance with Personal Hygiene and other Activities of Daily Living
- Coordination and Scheduling of Medical Appointments
- Transportation to Medical Appointments
- Licensed Nurse Available 24/7
- Access to a Secured Courtyard with Walkway
- Routine Safety Checks
- Wireless internet access



### **Service Level 1:**

Service level 1 includes all of the amenities and services included in the standard service package plus ***extensive assistance from resident life associates with activities of daily living***

### **Service Level 2:**

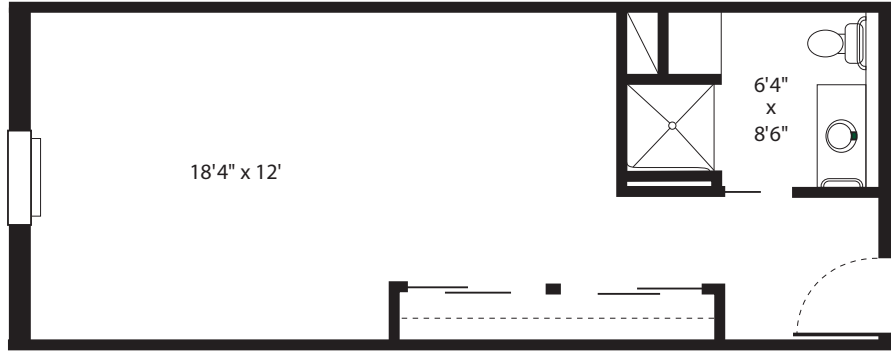
Service level 2 includes all of the amenities and services included in the standard service package plus ***maximum assistance from resident life associates with activities of daily living***

# Floor Plan Options



## Studio

330 sq. ft.



## Semi-Private Studio

480 sq. ft.

